



Werribee Irrigation District

Recycled Water Scheme

The First Years

Dr Martin Kent, Managing Director, and Clinton Rodda, General Manager, Water Supply, Southern Rural Water

Contents...

- About Werribee Irrigation District
- Genesis of the Recycled Water Scheme
- The Architecture of the Scheme
- Results for the first few years
- Challenges and Achievements
- Towards the Future...



About the Werribee Irrigation District

Location of the WID...



Werribee Irrigation District...

- Around 3000 hectares
- Approximately 10,000ML of water right
- 200 customers
- 60km of channels
- 95% market garden
- Major producer of broccoli, lettuce, cauliflower, to Victoria and beyond
- Reliable river water source – 150% to 180% of water right historically available

Typical picture of the WID...





Genesis of the recycled water scheme

The lead up to the scheme...

- Low inflow period leading to 2003
- Customer consultative committee representatives work with government
- Key principles emerged
 - Relief for irrigators in short and long term
 - Environmental benefits to offset commitment to the scheme
- Interim Potable Water scheme
- Construction of Class A Treatment Plant
- Interim phase of scheme

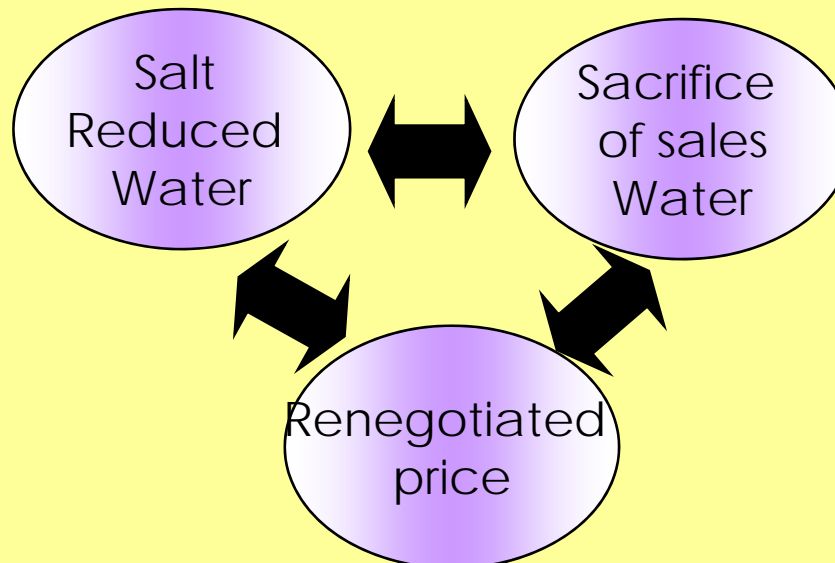


The architecture of the scheme

Underlying principles...

Interim Scheme (to 2009)

Final Scheme (post 2009)



Architecture of the Scheme...

Regional
Environmental
Improvement Plan

Defines key environmental responsibilities for each party (supplier, retailer and customer)

Bulk Recycled
Water Agreement

Supply arrangements between SRW and Melbourne Water

Customer Supply
Agreements

Mutual obligations of SRW and the customer along with the customer's environmental obligations (CSMP)

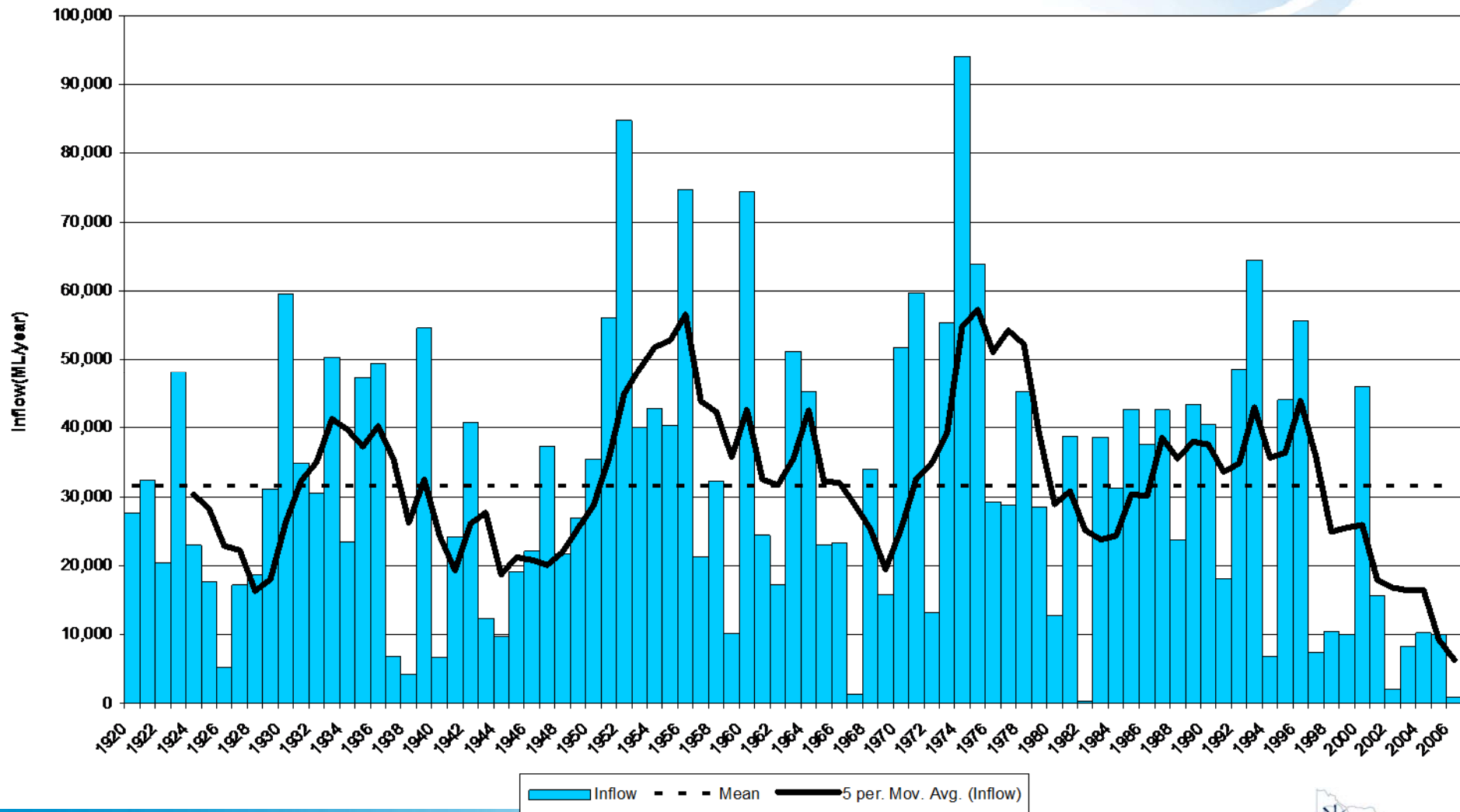


Results for the first few years

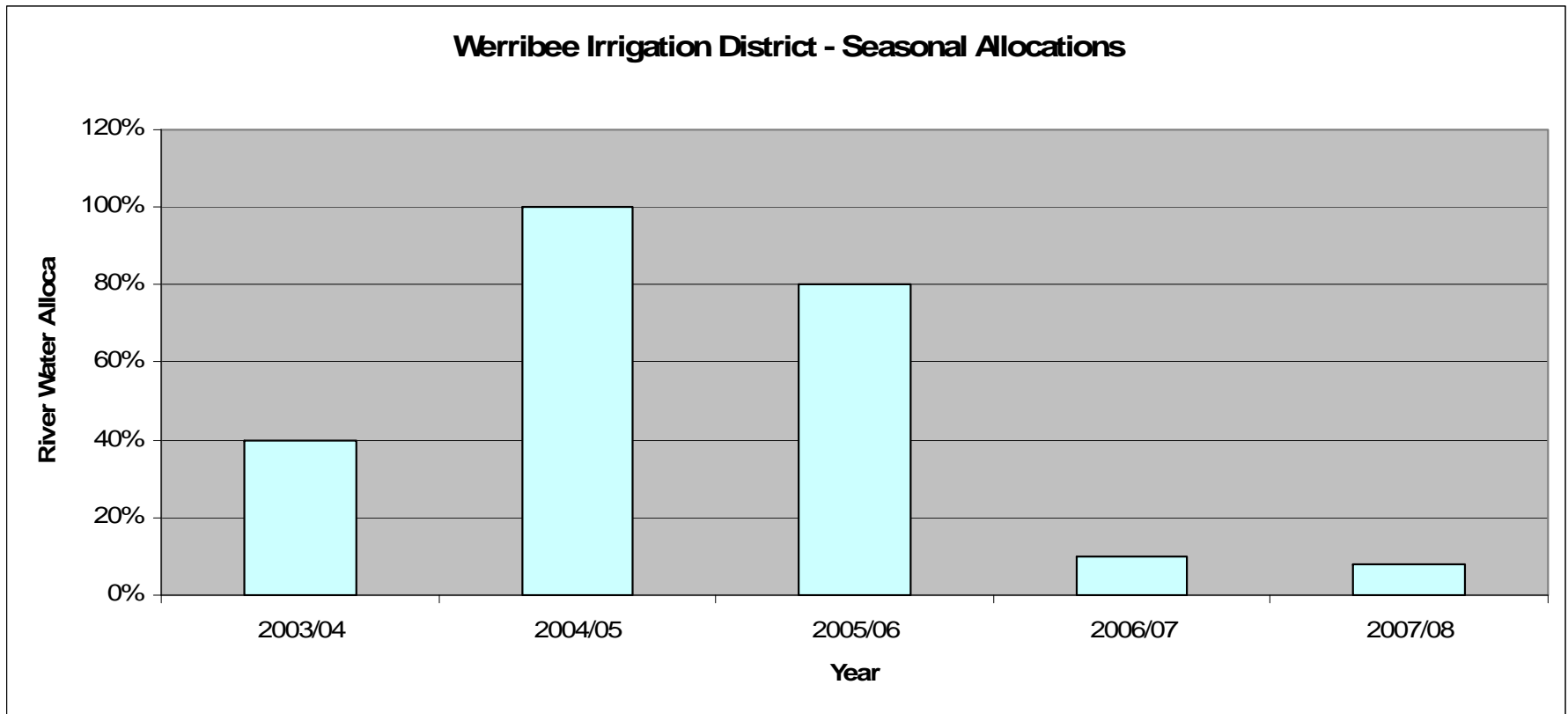
River flows...

Lerderderg River seasonal inflow 1920 to 2006

(Inflow at the diversion tunnel on calendar year basis)



Seasonal Allocations - River Water...

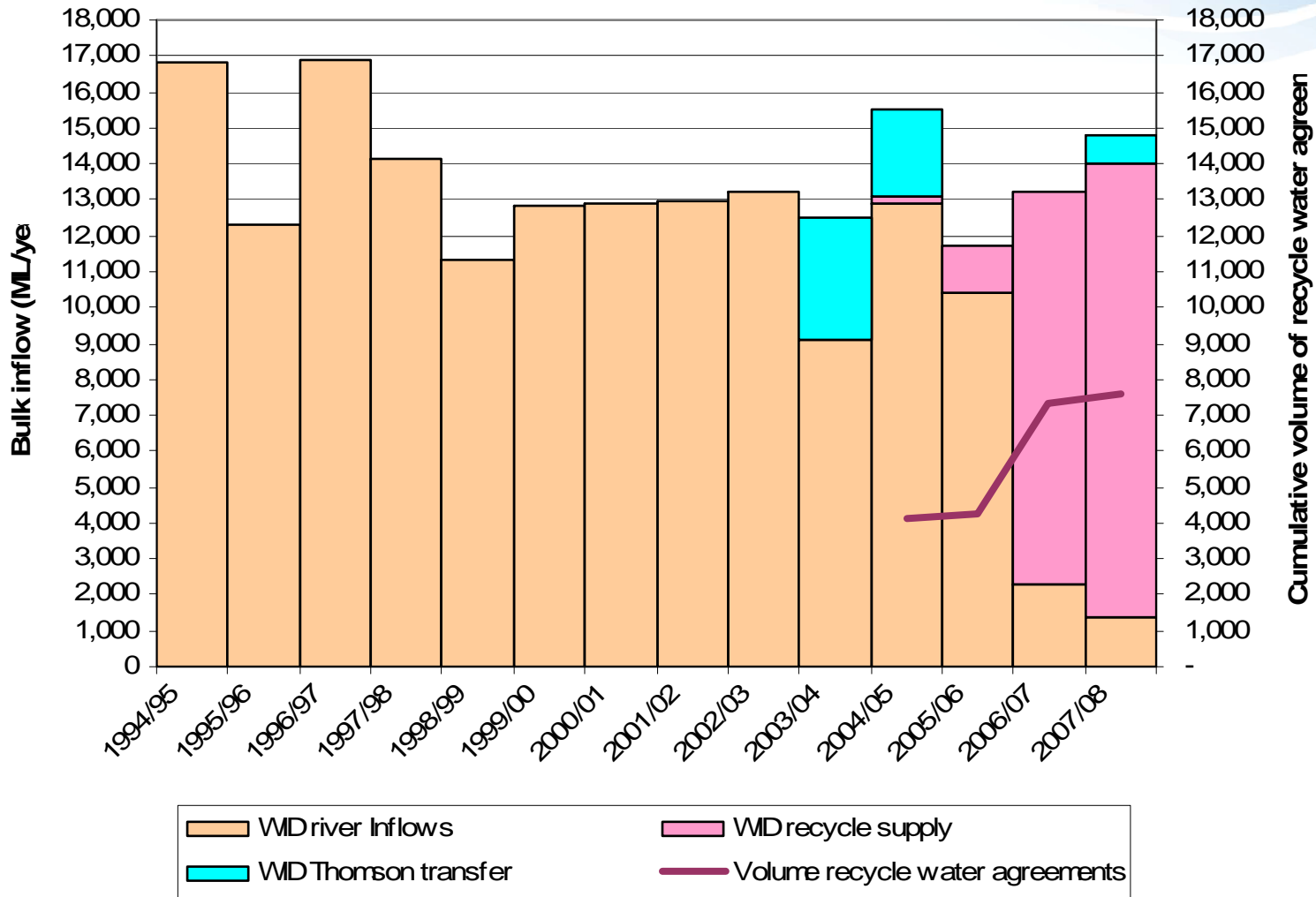


Recycled Water Customers...



Bulk Supply into WID

Bulk inflows into WID





Challenges and achievements

Challenges and achievements...

- Demand exceeding supply capability
 - MWC increasing capacity
 - 7 day operation
 - Rosters and restricted volumes
 - 70% capacity maintained
- Reliability
 - Algal blooms
 - Process enhancement
 - Risk management plans
 - No loss of crops through non supply
- Crop issues

Challenges and achievements...

- **Impact on soil salinity**
 - 2/3rds deteriorated, 1/3 steady or improved
 - Land and on farm management committee
 - Demonstration sites showing best practice
 - Case study – leaching fractions
 - Thomson Water Supply – 2007/08
- **Maintaining crop quality**
 - Increasing customer expectations
 - Increased water use
 - Increased gypsum use
 - Modified fertiliser use
- **Decision not to proceed with salt reduction plant**



Towards the Future

Toward the future...

- Short term
 - Land and “on farm” management committee
 - Reliability enhancements
 - Further contingency supplies
 - Potential extension of interim phase of scheme
- Longer term
 - Western Irrigation Futures
 - Long term strategic plan for WID and BMID
 - Water Security
 - Infrastructure options



Questions...